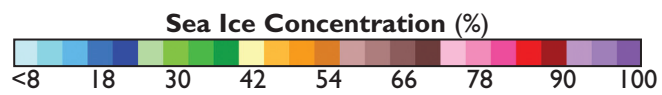
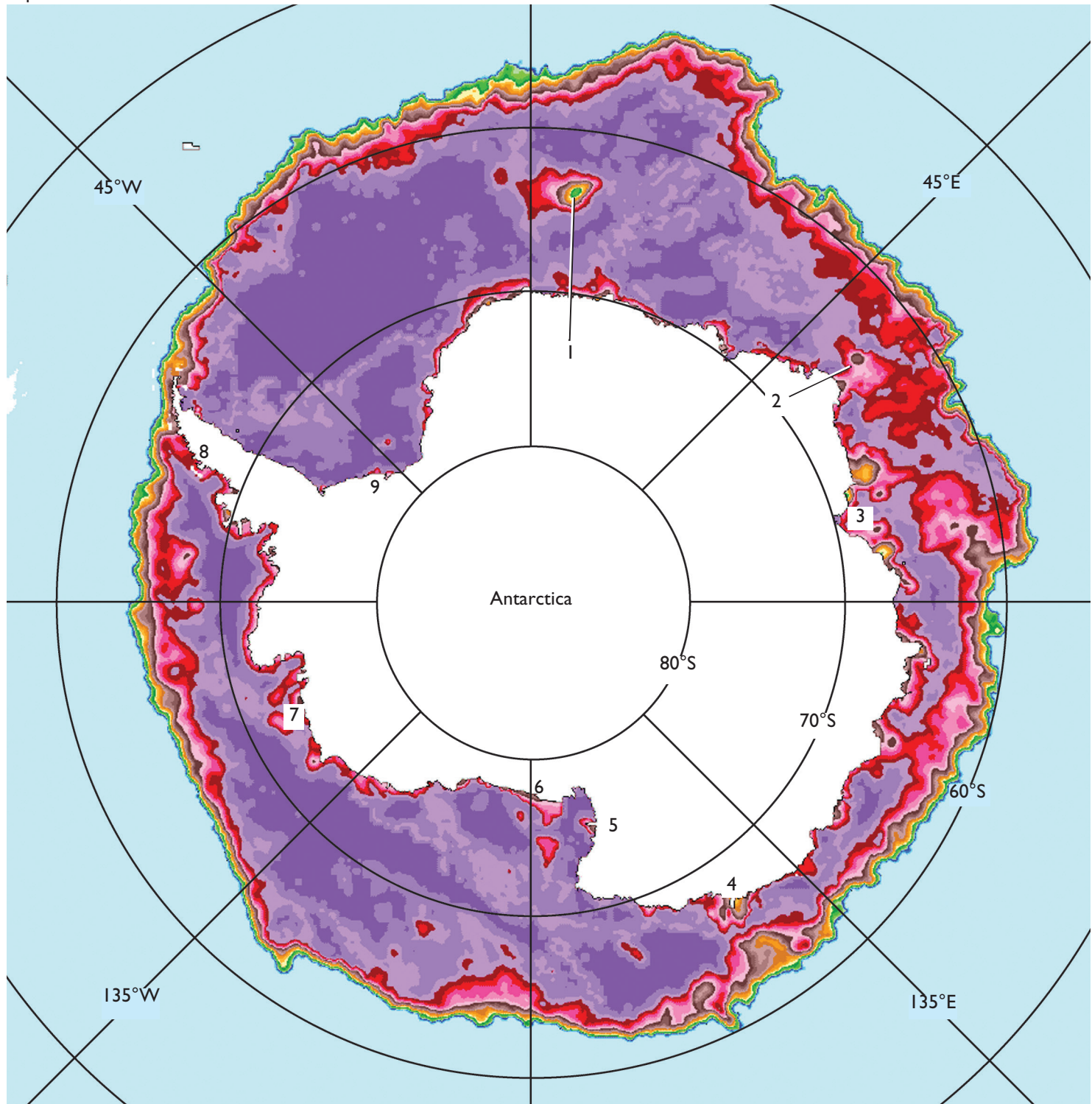


September 17, 1994



Bay (LH), 4. Mertz Glacier (LH), 5. Terra Nova Bay (LH), 6. Ross Sea (LH), 7. Pine Island (LH), 8. Marguerite Bay (LH), and 9. Ronne Ice Shelf (LH). The polynyas are highlighted by areas of lower ice concentrations adjacent to the numbers. (Image from the SSMI instrument on a DMSP satellite.)