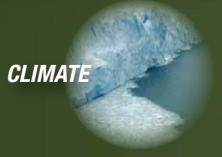


SERVIR the Regional Visualization and Monitoring System was started by the National Aeronautics and Space Administration (NASA) and the US Agency for International Development (USAID) in 2005. It provides environmental decision support in multiple regions across the globe using Earth observation and geospatial information.



Coordination Office
Marshall Space Flight Center
Huntsville, Alabama, USA
servirglobal.net

Regional Hubs

SERVIR-Africa
Regional Center for Mapping of
Resources for Development (RCMRD)
Nairobi, Kenya

SERVIR-HIMALAYA
International Centre for Integrated
Mountain Development (ICIMOD)
Kathmandu, Nepal

For more information visit:

www.nasa.gov

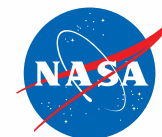
www.servirglobal.net

www.usaid.gov

The *SERVIR* Program

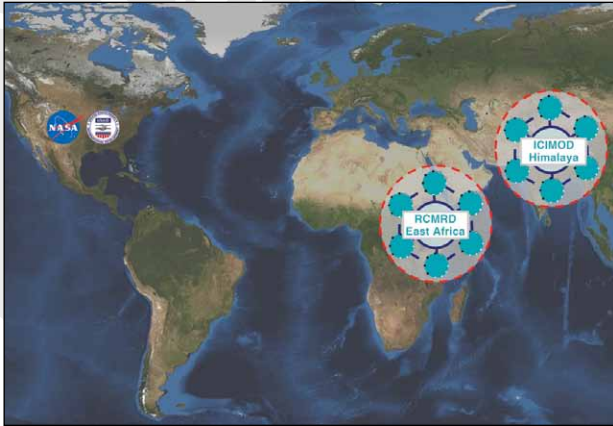
From Space to Village, Bringing People and Their Environment into Harmony

Supporting Nations in Mesoamerica, East Africa, and the Hindu Kush-Himalaya Region



Partnerships

SERVIR's strength resides in its unique collaboration between NASA's technical expertise and USAID's role as a development organization. It also relies on partnerships with NOAA, USGS, USFS, and USEPA as well as the critical regional hubs.



Decision Support

SERVIR improves environmental management and resilience to climate change by strengthening the capacity of governments and other key stakeholders to integrate Earth observations and geospatial technologies into decision making for sustainable development.

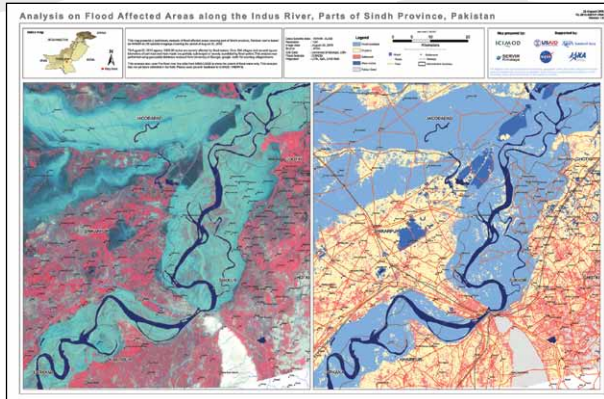


Image Credit: Science Magazine

One-Stop

SERVIR is establishing a geospatial one-stop online data portal so users can find and combine data sets in useful ways. The One-Stop includes a catalog of base layer data sets and models that help support decision making as well as address issues related to climate change, biodiversity, disasters, ecosystems, health, water, and weather.



Expanding the Network

These critical regional hubs are ultimately where the "magic" happens. Capacity within the hubs improves, the network of stakeholders and end-users expands with the regions, and the hubs can interact beyond their regions to engage the entire SERVIR network.



End-User Engagement

SERVIR works with host nations to determine needs and prioritize development of applications for improved decision-making.



Photo Credit: CATHALAC

Capacity Building & Training

Critical to SERVIR's mission is providing world-class training and focused capacity-building efforts to assist our customers and stakeholders in learning how to most beneficially utilize SERVIR's resources.

Tools

A recent success is the development of a stream-flow estimation and flood prediction model for East Africa. Originally developed at NASA, this model was transitioned and greatly improved upon and is now providing near-real-time outputs for the Kenya Meteorological Department.

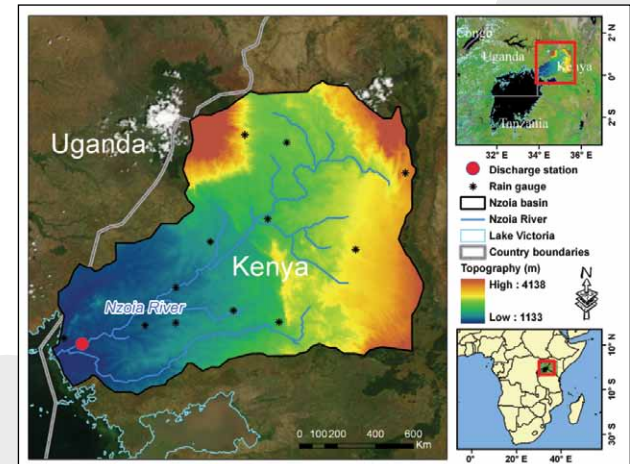


Image Credit: University of Oklahoma