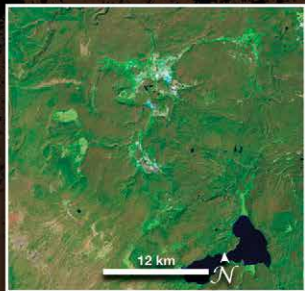


World Parks

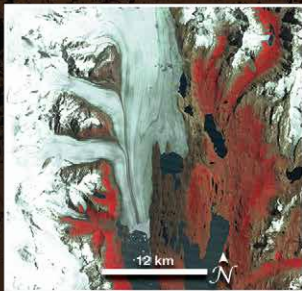
National Aeronautics and
Space Administration



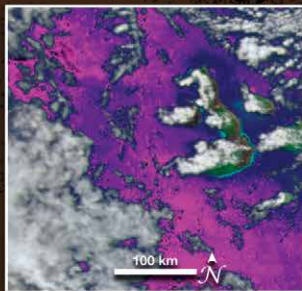
NASA Applied Sciences Program



Yellowstone - United States
August 5, 1987



Upsala Glacier - Argentina
April 14, 1986



Galápagos Islands - Ecuador
March 12, 1998



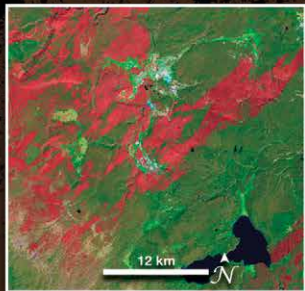
Tesso Nilo - Indonesia
June 3, 1990

World Parks

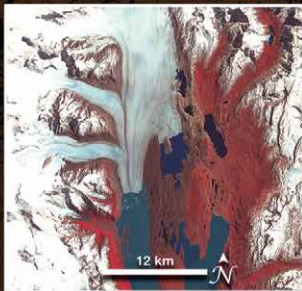
National Aeronautics and
Space Administration



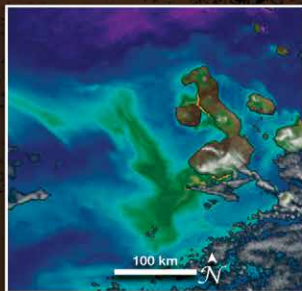
NASA Applied Sciences Program



Yellowstone - United States
August 2, 1989



Upsala Glacier - Argentina
January 14, 2001



Galápagos Islands - Ecuador
June 24, 1998



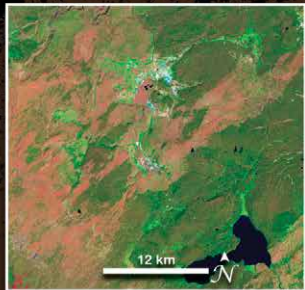
Tesso Nilo - Indonesia
August 8, 2002

World Parks

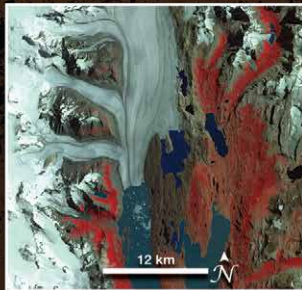
National Aeronautics and
Space Administration



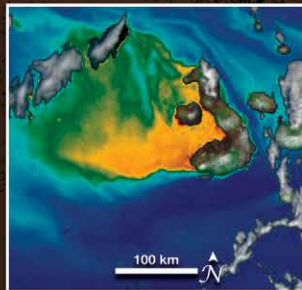
NASA Applied Sciences Program



Yellowstone - United States
July 26, 2001



Upsala Glacier - Argentina
February 19, 2005



Galápagos Islands - Ecuador
July 7, 1998



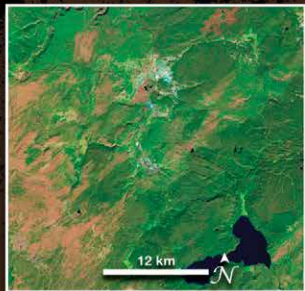
Tesso Nilo - Indonesia
May 1, 2007

World Parks

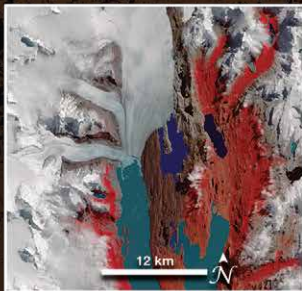
National Aeronautics and
Space Administration



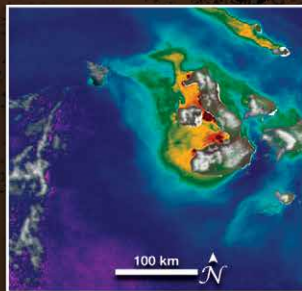
NASA Applied Sciences Program



Yellowstone - United States
September 24, 2011



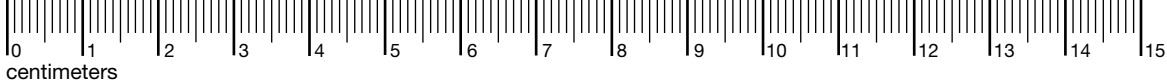
Upsala Glacier - Argentina
March 16, 2014



Galápagos Islands - Ecuador
March 12, 1999



Tesso Nilo - Indonesia
June 21, 2014



World Parks

NASA Applied Sciences Program

AppliedSciences.NASA.gov



Yellowstone, United States

In the summer of 1988, lightning and human-ignited fires consumed vast stretches of *Yellowstone National Park* located in the United States. These images show a portion of the park prior to the burn, the scars left in the wake of the fires, and the slow recovery in the 23 years that followed. Green shades indicate forests, while red shades indicate burn scars.

Photo credit: Jeff Gunn



Upsala Glacier, Argentina

Many glaciers around the world are in retreat due to rising global temperatures. These images of Upsala Glacier in *Los Glaciares National Park*, located in the Andean Mountains in Argentina, show how the glacier has retreated 7.2 kilometers (~4.5 miles) between 1986 and 2014—an average rate of approximately 260 meters (~853 feet) per year.

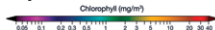
Photo credit: Calyponte



Galápagos Islands, Ecuador

These images show phytoplankton blooms in the *Galápagos Marine Reserve* following the 1997-98 El Niño event. During the start of a La Niña (in May 1998) ocean temperatures plummeted and the ocean exploded with large phytoplankton blooms. Chlorophyll pigments in phytoplankton enable scientists to monitor blooms from space.

Photo credit: Dag Peak



Tesso Nilo, Indonesia

These images show deforestation (light tan shades) within the lush green tropical forests of *Tesso Nilo National Park* in Indonesia. Established in 2004, the park boundary is outlined in red. The biggest driver of deforestation in Indonesia is agriculture. For example, vast amounts of land are being converted to accommodate large-scale production of palm oil.

Photo credit: Jennykapau

inches

